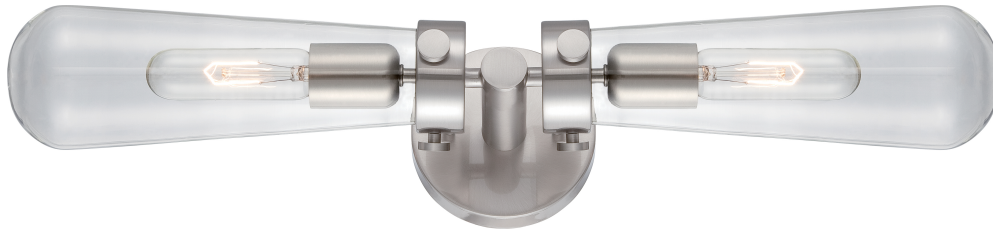


60-5263 - Beaker; 2 Light; Wall Sconce with Clear Glass; Vintage lamps Included; Brushed Nickel Finish



GENERAL

Company	NUVO
EA Height	6.0
EA Width	13.5
EA Length	18.75
Bulb Included	Yes
Glass Finish	Clear
Extends (in)	5.88
Material	Steel
Fixture Type	Sconce
Includes	(2) 20W Incandescent Lamps
Status	Active
Style	Transitional
Top To Outlet	11.75
Up Down Installation	Universal
CCT Selectable	No
Collection	Beaker
Finish Family	Nickel
Amps	0.500A
Mounting Diameter	4.75
Has Camera	No
IOT Enabled	No
Indoor Outdoor	Indoor
Product Technology	Incandescent
Fixture Lamp Count	2

ELECTRICAL

Dimmable	Lamp Dependent
Volts	120v
Watts	60W

PHYSICAL

Lamp Base	Medium
Finish	Brushed Nickel
ANSI Base	E26
Lamp Type	T9

ADDITIONAL INFO

Warranty	1-Year
Installation Notes	If installed horizontally the Top to Outlet is 2.25 inches. Top to Outlet is 11.75 inches when installed vertically.

PACKAGING

UPC	045923652639
Case Cube	0.8789
Case Height	6.0
Case Length	18.75
Case Quantity	1
Case UPC	10045923652636
Case Weight	3.92
Case Width	13.5
EA Cube	0.8789
EA Height	6.0
EA Length	18.75
EA Quantity	1
EA Weight	3.92
EA Width	13.5
Pack Type	Box
Web Height	4.75
Web Width	23.75

COMPLIANCE

ADA Compliant	No
CA Prop 65	Lead
Location Rating	Damp
ROHS Compliant	Yes
Safety Listing	cULus
California Ban	Lawful for sale
UL Application	Wall
DLC Approved	No
Title 20	Exempt
T24/JA8 Compliant	No