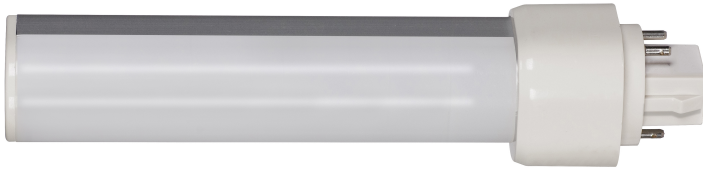


S29851 - 9 Watt LED PL 4-Pin; 3500K; 1050 Lumens; G24q base; 50000 Average rated hours; 120 Deg. Beam Angle; Type A; Ballast dependent


GENERAL

Company	SATCO
EA Height	6.8
EA Width	1.5
EA Length	1.5
Lamp Ballast Type AB	Type A
Ballasting Requirements	Ballast required, check compatibility
Dimmable Text	Only Dimmable with Compatible Dimming Ballasts
Lamp Filament	LED
Fixture Type	PL
Status	Active
Style	Transitional
Total Harmonic Distortion	20%
Working Voltage	Ballast dependent
CCT Selectable	No
Wattage Selectable	No
Finish Family	White
Amps	0.075-0.032A
Has Camera	No
IOT Enabled	No
Lens Finish	Frost
Lensed	Yes
Operating Position	Horizontal
Power Factor	0.9
SDS Class	LED_Lamp
Product Technology	LED
Fluor Equiv	26W/32W/42W
Incandescent Equivalent	40W

ELECTRICAL

CCT (Kelvin Temp)	3500K
Dimmable	Yes-Dimmable
Hours Rated	50000
Beam Angle (degree)	120
Color Temp	Neutral White
CRI	80+
Dimming Type	Only Dimmable with Compatible Dimming Ballasts
Operating Frequency	50/60Hz
Operating Temp	-20C (-4F) to +45C (+113F)
Lumens	1050L
Volts	Ballast Dependent
Watts	9W

PHYSICAL

Lamp Base	G24q (4-Pin)
Finish	Frost
Housing Color	White
ANSI Base	G24q
Lamp Type	PL
MOD Lamps	1.09
MOL	6.63

ADDITIONAL INFO

Warranty	5-Years
Rated For Enclosed Fixture	Yes

PACKAGING

UPC	045923298516
Case Cube	0.6495
Case Height	9.0
Case Length	14.5
Case Quantity	50
Case UPC	10045923298513
Case Weight	12.0
Case Width	8.6
EA Cube	0.0089
EA Height	6.8
EA Length	1.5
EA Quantity	1
EA Weight	0.22
EA Width	1.5
Inner Cube	0.1083
Inner Height	7.09
Inner Length	8.0
Inner Quantity	10
Inner UPC	20045923298510
Inner Weight	2.06
Inner Width	3.3
Pack Type	Box
Web Length	6.63
Web Width	1.09

COMPLIANCE

DLC ID	PZGSP7ZP
FCC Compliant	Yes
Location Rating	Damp
ROHS Compliant	Yes
Safety Listing	cULus
California Ban	Lawful for sale
DLC Approved	Yes
Title 20	Exempt
T24 Compliant	No