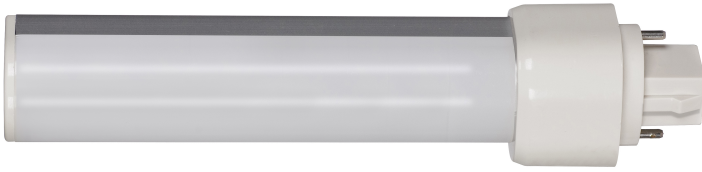


**S8533** - 9 Watt LED PL 2-Pin; 4000K;1000 Lumens; G24d base; 50000 Average rated hours; 120 Deg. Beam Angle; Horizontal; Type B; Ballast Bypass


**GENERAL**

Company	SATCO
EA Height	1.42
EA Width	1.42
EA Length	6.7
Lamp Ballast Type AB	Type B
Ballasting Requirements	Ballast Bypass- Direct wire only 100V-277V
Lamp Filament	LED
Fixture Type	PL
Status	Active
Style	Transitional
CCT Selectable	No
Wattage Selectable	No
Finish Family	White
Amps	0.075-0.032A
Has Camera	No
IOT Enabled	No
Lens Finish	Frost
Lensed	Yes
Operating Position	Horizontal
Power Factor	0.99
SDS Class	LED_Lamp
Product Technology	LED
Fluor Equiv	18W/26W
Incandescent Equivalent	40W

**ELECTRICAL**

CCT (Kelvin Temp)	4000K
Dimmable	Non-Dimmable
Hours Rated	50000
Beam Angle (degree)	120
Color Temp	Cool White
CRI	80+
Operating Frequency	50/60Hz
Operating Temp	-4F to +113F (-20C to +45C)
Lumens	1000L
Volts	120V-277V
Watts	9W

**PHYSICAL**

Lamp Base	G24d (2-Pin)
Finish	Frost
Housing Color	White
ANSI Base	G24d
Lamp Type	PL
MOD Lamps	1.09
MOL	6.63

**ADDITIONAL INFO**

Warranty	5-Years
Installation Notes	2-pin LED lamps work in both 2-pin (magnetic) and 4-pin (electronic) sockets.
Rated For Enclosed Fixture	Yes

**PACKAGING**

UPC	045923085338
Case Cube	0.6943
Case Height	8.47
Case Length	17.53
Case Quantity	50
Case UPC	10045923085335
Case Weight	11.55
Case Width	8.08
EA Cube	0.0078
EA Height	1.42
EA Length	6.7
EA Quantity	1
EA Weight	0.2
EA Width	1.42
Inner Cube	0.0982
Inner Height	7.09
Inner Length	7.6
Inner Quantity	10
Inner UPC	20045923085332
Inner Weight	1.9
Inner Width	3.15
Pack Type	Box
Web Length	6.63
Web Width	1.09

**COMPLIANCE**

FCC Compliant	Yes
Location Rating	Damp
ROHS Compliant	Yes
Safety Listing	cULus - Certified, cULus - Classified
California Ban	Lawful for sale
DLC Approved	No
Title 20	Exempt
T24/JA8 Compliant	No