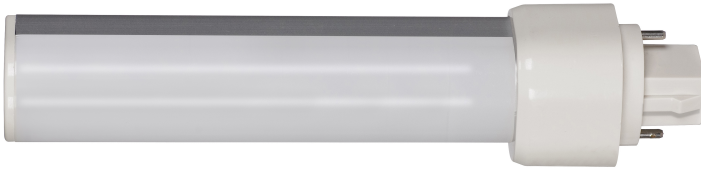


**S9854** - 9 Watt LED PL 2-Pin; 3000K; 850 Lumens; G24d base; 50000 Average rated hours; 120 Deg. Beam Angle; Type A; Ballast dependent


**GENERAL**

Company	SATCO
EA Height	6.8
EA Width	1.5
EA Length	1.5
Lamp Ballast Type AB	Type A
Ballasting Requirements	Ballast required, check compatibility
Lamp Filament	LED
Material	Aluminum / Plastic
Fixture Type	PL
Status	Active
Style	Contemporary
CCT Selectable	No
Wattage Selectable	No
Finish Family	White
Has Camera	No
IOT Enabled	No
Lens Finish	Frost
Lensed	Yes
Operating Position	Horizontal
Power Factor	0.83
SDS Class	LED_Lamp
Product Technology	LED
Fluor Equiv	26W
Incandescent Equivalent	40W

**ELECTRICAL**

CCT (Kelvin Temp)	3000K
Dimmable	Non-Dimmable
Hours Rated	50000
Beam Angle (degree)	120
Color Temp	Warm White
CRI	80+
Operating Frequency	60Hz
Operating Temp	-20C (-4F) to +45C (+113F)
Lumens	850L
Volts	Ballast Dependent
Watts	9W

**PHYSICAL**

Lamp Base	G24d (2-Pin)
Finish	Frost
Housing Color	White
ANSI Base	G24d
Lamp Type	PL
MOD Lamps	1.09
MOL	6.63

**ADDITIONAL INFO**

Warranty	5-Years
Rated For Enclosed Fixture	Yes

**PACKAGING**

UPC	045923098543
Case Cube	0.6495
Case Height	9.0
Case Length	14.5
Case Quantity	50
Case UPC	10045923098540
Case Weight	12.0
Case Width	8.6
EA Cube	0.0089
EA Height	6.8
EA Length	1.5
EA Quantity	1
EA Weight	0.22
EA Width	1.5
Inner Cube	0.1083
Inner Height	7.09
Inner Length	8.0
Inner Quantity	10
Inner UPC	20045923098547
Inner Weight	0.0
Inner Width	3.3
Pack Type	Box
Web Length	6.63
Web Width	1.09

**COMPLIANCE**

FCC Compliant	Yes
Location Rating	Damp
ROHS Compliant	Yes
Safety Listing	cULus - Classified
California Ban	Lawful for sale
DLC Approved	No
Title 20	Exempt
T24 Compliant	No